

# HELIX CURVED STAIR LIFT

As Unique as You and Your Home

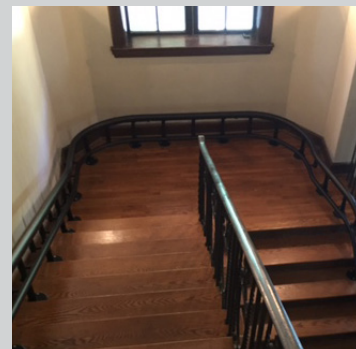


## ONE OF A KIND

A Helix Curved Stair Lift is one of a kind, made just for you. Harmar designs are crafted to fit your needs, staircase, and decor.

The Helix is built to last. Every staircase that is fitted with a Helix is measured with a calibrated camera kit for digital accuracy. Constructed with highly durable steel, custom precision-bent rails, and finished by experienced craftsmen, this true curved rail is highly engineered to give you an extraordinarily smooth ride.

Your unique path to independence will allow you to enjoy time with your family and your home on every level giving you independence, freedom and the quality of life you deserve.



## TIGHTER CURVES

The Helix's narrow profile mounts closer to the wall, hugging the stairway with tighter bends and flowing radius curve. This means more room for you, and a comfortable smooth ride.

# HELIX IS CUSTOMIZED TO YOU

## Helix Curved Stair Lift



Comfortable upholstered seat, with stitching detail.



Compact design folds to 16" when not in use.



Emergency stop designed to enhance safety and security.



*My Helix was made just for me. Most importantly, it was made for my independence, my confidence, my quality of life. It's a work of art that has given me full access to my home.*

# 20

Feet Per Minute

# 350

Pound Capacity

# 16"

Folded Width

# 164'

Max Travel Length

### Helix Series Product Specifications

Weight Capacity	350 lbs.
Drive System	Steel Rack and Pinion
Lift Speed	20 FPM
Seat	19" W x 15" D x 20.5" H
Folded Width	16"
Control Circuit	24V DC
Standard Colors	Black or Beige
Max Rail Length	164 ft.
Warranty	2 Year on Components
Options	Wide Seat 21", Key Switch, Additional Call/Send, Additional Charging Station, Custom Colors

### OUTSIDE OPTIONS

The Helix Curved Stair lift is not limited to the indoor confines of your home. Highlights of the outdoor rail include:

- Weather treated rail
- ETL-rated Chassis
- Seat and Chassis cover included

